

Printing specs...

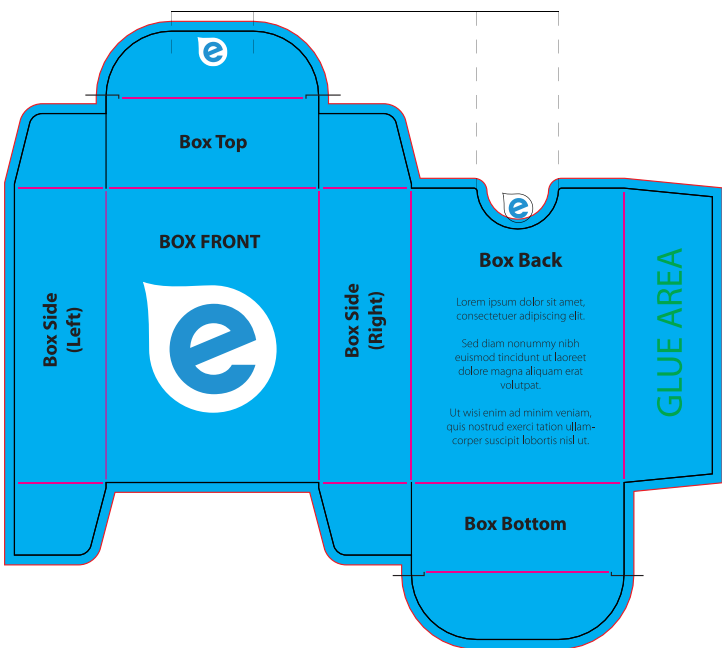
- All template lines and text removed (do **not** remove the black squares)
- At 1:1 scale at 450 x 320mm page size
- No crop marks, registration marks or colour bars
- No Transparency (un-check transparency in save dialogue if it is on)
- Colour and/or images to the edge must extend over cut area by 3mm

For best results...

- Submit files in **PDF** format only
- Flatten ALL layers
- Convert ALL text to outlines
- Photos & Images (CMYK & min. 300 DPI)
- Use CMYK colour mode (Not RGB)
- All Black Text - C:0 M:0 Y:0 K:100
- Solid Black & Grey areas need 4 colour percentages (i.e: Rich Black - C:60 M:50 Y:50 K:100)

Example...

Please remember to supply your final file with all template elements removed (do not remove the black squares).



IMPORTANT! Remove all template lines.

Our specialists can tell if the template will line up so no need to send files with anything more than what you want to print. If we have to remove the lines manually we cannot guarantee some artwork elements will not be accidentally removed as well.

